

# How Often Does LV Dysfunction Occur in Systemic Sclerosis, and How Does It Affect Mortality?

## STUDY DESIGN

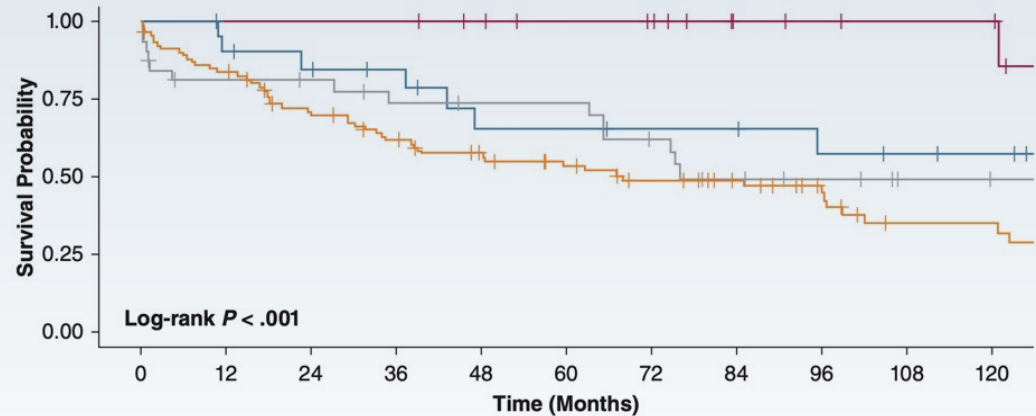
- **Retrospective study of 165 patients with systemic sclerosis (SSc)** who underwent both echocardiography and right heart catheterization

- **Definitions:**

Pulmonary hypertension (PH):  
mPAP >20 mm Hg

Left ventricular (LV) dysfunction:  
LV global longitudinal strain (GLS) <18%

## RESULTS



- **LV dysfunction occurred in**

- 74.2% with SSc-PH
- 51.2% without SSc-PH

- Patients with SSc-PH and LV dysfunction had an **HR of 12.64** (95% CI, 1.73-92.60) **for all-cause mortality** when adjusted for age, sex, SSc disease duration, and FVC.

LV dysfunction is common in SSc-PH and is associated with increased all-cause mortality. This suggests that LV GLS may be helpful in identifying underlying LV dysfunction and in risk assessment of patients with SSc-PH.