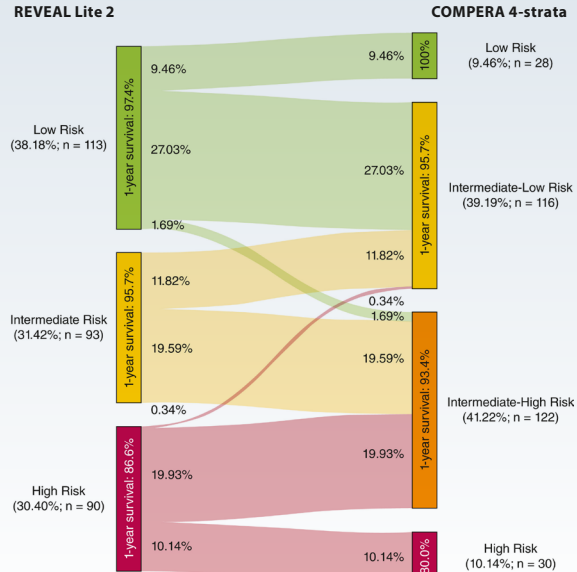


# Is the REVEAL Lite 2 Risk Assessment Model Better at Discriminating Risk Than the COMPERA Models?

## STUDY DESIGN

- Included patients with pulmonary arterial hypertension (PAH) consecutively enrolled between June 2011 and February 2022
- Underwent **risk stratification assessment** at first visit (baseline) and again during follow-up using REVEAL Lite 2 and COMPERA 3- and 4-strata models
- Followed characteristics (for a median of 12.3 months), including right heart catheter data, transplant-free survival, and all-cause mortality

## RESULTS



- When comparing models, **REVEAL Lite 2 provided a more accurate survival prediction at 3, 5, and 7 years** than COMPERA 3- and 4-strata models
- Patients who **deteriorated to a higher REVEAL Lite 2 risk group** by 1 level had a relative risk of 2.50 (1.23, 5.11) of death or transplantation compared with those who remained unchanged at follow-up

REVEAL Lite 2 was shown to more accurately risk stratified patients with PAH at baseline compared with the COMPERA models and demonstrated efficacy when used during follow-up.