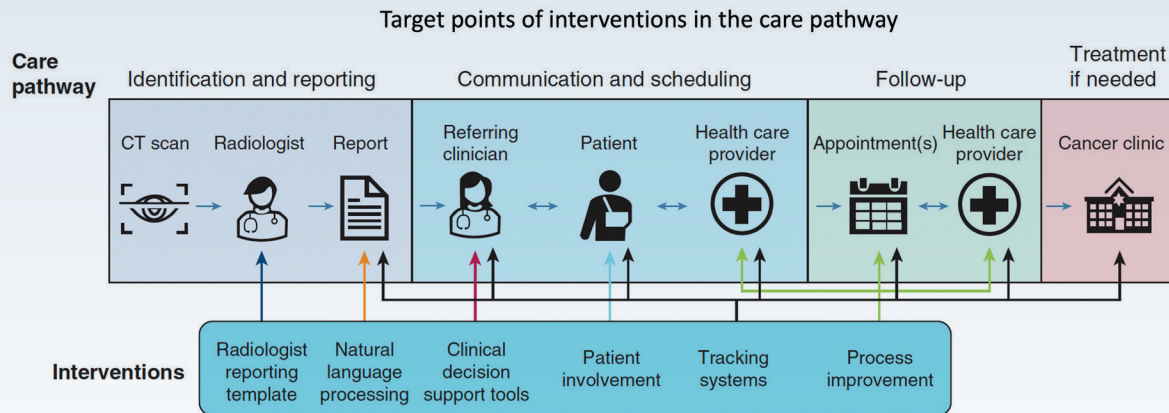


What Interventions Have Been Developed for Improving Adherence to Guidelines for the Management of Pulmonary Nodules?

STUDY DESIGN

- Systematic searches were conducted in Ovid MEDLINE, Cochrane, and Embase databases in March 2024, including any study design except case reports or case series
- 3,664 titles and abstracts, including 31 studies, were identified
- 6 intervention types were identified
- Risk of bias was serious or critical in most nonrandomized controlled trials

RESULTS



- All studies reported significant improvements in follow-up, guideline adherence, and early cancer detection
- Tracking systems may have the most potential for effectiveness

The findings of this study indicate that it is possible to significantly improve follow-up of patients with pulmonary nodules; however, variability in outcomes and limitations in study quality underscore the need for further evaluations using rigorous randomized controlled trials.